

# Drammens Teater

## General info Main Stage

- Parking:** 30 meter parking spot located alongside the venue load-in, in Øvre Stogate 12. Parking is only permitted on the right side of the street in marked up places. Permits will be issued by the venue representative. A 3 phase 32 A (400V) is available on request.
- Load in:** Load in is at street level next to the parking space with lift access from the sidewalk to the stage.
- Entrance Crew and Musicians:** Stage Entrance A next to load in with staircase access to dressing rooms
- Wifi:** Network: Drammens Teater, gjest  
Log-in: Open
- Dressing rooms:** 2 x 5 m x 3 m, dressing room w/ 4 stations  
1 x 6 m x 3 m, greenroom  
Bath & toilets is located in the hall next to the dressing rooms.  
All these facilities are located directly above the stage.
- A common area with a coffee machine, dish washer, fridge, sink with tap water and dining tables for 12- 16 people is located right outside the dressing rooms.
- dB Limit:** To ensure a healthy concert experience to our audience, and to comply with EU noise regulations towards our employees, we are enforcing a 103 dB (A) averaged over 15 minutes dB limit (Leq 15 = 103 dB(A)). Values will be measured at F.O.H. A properly calibrated measurement system Wave Capture RT-3 will be available to the sound engineer. We do not use any peak limiters or circuit breaker to enforce the rule.
- Fire & Pyro** Approved permit from the local Fire Department and Drammens Teater must be applied to the risk management document before get-in.
- Smoking** **Drammens Teater is a smoke free building and according to national laws smoking is prohibited in all public areas including the stage and dressing rooms. An outside smoking area is located in the backyard of the theatre.**
- Smoke/ haze:** Our venues are environmentally certified. We encourage artists to minimize the use of theatrical smoke and fog. However, if smoke/fog (or strobes) is being used, we would like to receive a notification in advance, in order to inform the audience. If there is children on stage we strongly recommend no use of smoke/ haze.

# Drammens Teater

## Sound Equipment Main Stage

<b>FOH:</b>	1	x	DigiCo SD7 Quantum w/ theatre software	
<b>Stage rack:</b>	1	x	DiGiCo SD rack, in 56 + 8 tube pre amps / out 24.	
	6	x	Cat 6 between stage and FOH	
<b>Main Speaker System:</b>	12	x	d&b Q7	
	4	x	d&b Q1	
	12	x	d&B Q-SUB	
Amplification:	9	x	d&b D12	
<b>Front Fill:</b>	4	x	d&b	E3
Amplification:	1	x	d&b D6	
<b>Delay</b>	4	x	d&b	E3
Amplification:	2	x	d&b D6	
<b>Monitor:</b>				
Wedges:	14	x	d&b M4	
Amplification:	4	x	d&b D12	
<b>Microphones:</b>	2	x	Shure Beta 91a	
	1	x	Shure Beta 91	
	2	x	Shure Beta 52	
	4	x	Shure SM 58	
	4	x	Shure Beta 58	
	1	x	Shure KSM9	
	8	x	Shure SM57	
	2	x	Shure Beta 57	
	2	x	Shure Ksm 109	
	4	x	Shure Beta 98 AMP	
	1	x	Sennheiser MD 421	
	2	x	Sennheiser MD 441	
	2	x	Neumann KSM 105	
	4	x	Neumann Km 184	
	10	x	Audio Technica ATM 350	
	4	x	Audio Technica AT 4040	
	1	x	Audio Technica AE 2500	

<b>DI:</b>	4	x	Radial PRO 48 Active DI
	6	x	Radial ProDI Passive DI
	2	x	Radial ProD2 Passive Stereo DI
	2	x	Radial ProAV2 Passive Stereo
	1	x	DI Radial USB PRO
	6	x	LA Audio Active DI

**Frequencies  
allowed for wireless  
microphones & IEM:**

510 - 518 MHz (K 26)  
614 - 622 MHz (K 39)  
670 - 686 MHz (K 46- 47)  
738 - 753 MHz (K - SDL)

Secondary frequency range: 494–  
694 MHz and 733–758 MHz with  
maximum permitted radiated power  
of 50 mW e.r.p.

The conditions for use of these  
secondary frequency bands are that  
the use does not disturb primary  
users of the band.

**Contact:**

Tormod Riseng – Sound technician  
[tormod@drammenscener.no](mailto:tormod@drammenscener.no)

Rune Magnusson – Sound  
technician  
[rune@drammenscener.no](mailto:rune@drammenscener.no)

Ernst G. Hagby - Sound Technician  
[ernst@drammenscener.no](mailto:ernst@drammenscener.no)

Toro Heiskala – Technical Manager  
[toro@drammenscener.no](mailto:toro@drammenscener.no)

**dB Limit:**

To ensure a healthy concert experience to our audience, and to comply with EU noise regulations towards our employees, we are enforcing a 103 dB (A) averaged over 15 minutes dB limit (Leq 15 = 103 dB(A)) and a 99 dB (A) averaged over 30 minutes (Leq 30 dB(A)). Values will be measured at F.O.H. A properly calibrated measurement system, WaveCapture RT-3 will be available to the sound engineer.

We do not use any peak limiters or circuit breaker to enforce the rule.

# Drammens Teater

## Sound Equipment Main Stage (Extended)

<b>Additional IO:</b>	1	x	Trafo Split 3 way, Harting / Siemens / XLR
<b>Monitor Mix:</b>	1	x	DigiCo SD9 / Avid- Digidesign Venue Profile
<b>Additional Wedges:</b>	4	x	d&b M4
<b>Drum Fill:</b>	2	x	d&b Q-Sub
	1	x	d&b Q7
<b>Amplification:</b>	1	x	d&b D12
<b>Wireless:</b>	2	x	Shure AD4 Q A 470- 636 MHz
	4	x	Shure AD2 G56 470- 636 MHz w/ Beta 58 Heads
	6	x	Shure AD1 G56 470- 636 MHz Bodypacks
	6	x	DPA 4066 Headset microphones

**In-Ear System:** 8 x Sennheiser EW 300 IEM G3  
Range 626 - 668 MHz (B)

**Frequencies allowed for wireless microphones & IEM**

510 - 518 MHz (K 26)  
614 - 622 MHz (K 39)  
670 - 686 MHz (K 45- 48)  
738 - 753 MHz (K -SDL)

Secondary frequency range: 494–694 MHz and 733–758 MHz with maximum permitted radiated power of 50 mW e.r.p.

The conditions for use of these secondary frequency bands are that the use does not disturb primary users of the band.

**dB Limit:** To ensure a healthy concert experience to our audience, and to comply with EU noise regulations towards our employees, we are enforcing a 103 dB (A) averaged over 15 minutes dB limit (Leq 15 = 103 dB(A)). Values will be measured at F.O.H. A properly calibrated measurement system Wave Capture RT-3 will be available to the sound engineer. We do not use any peak limiters or circuit breaker to enforce the rule.

# Drammens Teater

## Lighting Equipment Main Stage

<b>Desk</b>	1	x	GrandMA 3 Light
<b>DMX Universes</b>	6	x	4 used for house rig, 2 empty universes on stage
<b>Dimmers</b>	220	x	ETC Sensor+ 3kW pr channel
<b>Automated Lights</b>	13	x	Martin Mac Encore Performance CLD
	12	x	Clay Paky K25 B-eye
	8	x	Martin Mac Encore Wash CLD (front light)
<b>Generic Front Lights</b>	7	x	Selecon Pacific 7,5°-19°
	11	x	Selecon Pacific 25°-50°
	14	x	Strand SL 15°-32°
	6	x	ETC S4jr 25°-50°
	4	x	ETC Source4 Series 2 Lustr+
<b>Generic Stage Lights</b>	22	x	Par64 CP62 (one per channel)
	4	x	4lights (two channels per fixture)
<b>Atmospheric</b>	1	x	MDG Atmosphere APS, controlled from stage
	1	x	Antari Z- 3000 II
<b>Extra available fixtures by prior agreement only</b>	12	x	Floorcans CP62
	8	x	ETC ColorSource PAR on floorstands
	2	x	8lights
	2	x	Martin Atomic 3000
	1	x	ShowLED Classic star backdrop (extra charge)
	2	x	Robert Juliat MANON follow spots* (extra charge)

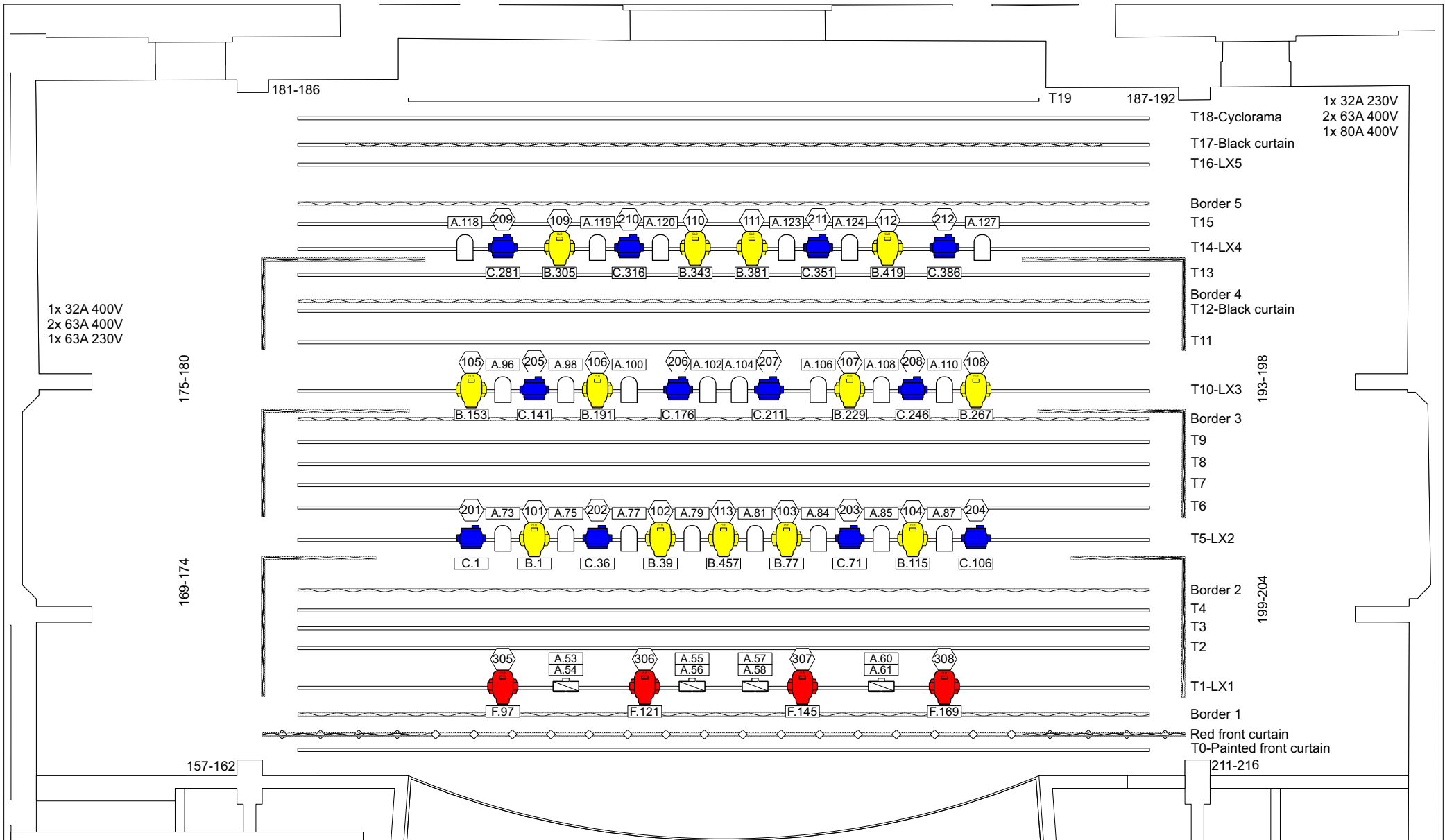
\*Must be booked at contract signing for reservation of seating in the audience area






**Contact:** Toro Heiskala – Technical Manager  
[toro@drammenscener.no](mailto:toro@drammenscener.no)

Thomas Evensen – Lighting Technician  
[thomase@drammenscener.no](mailto:thomase@drammenscener.no)

Ståle Kilen – Lighting Technician  
[stale@drammenscener.no](mailto:stale@drammenscener.no)

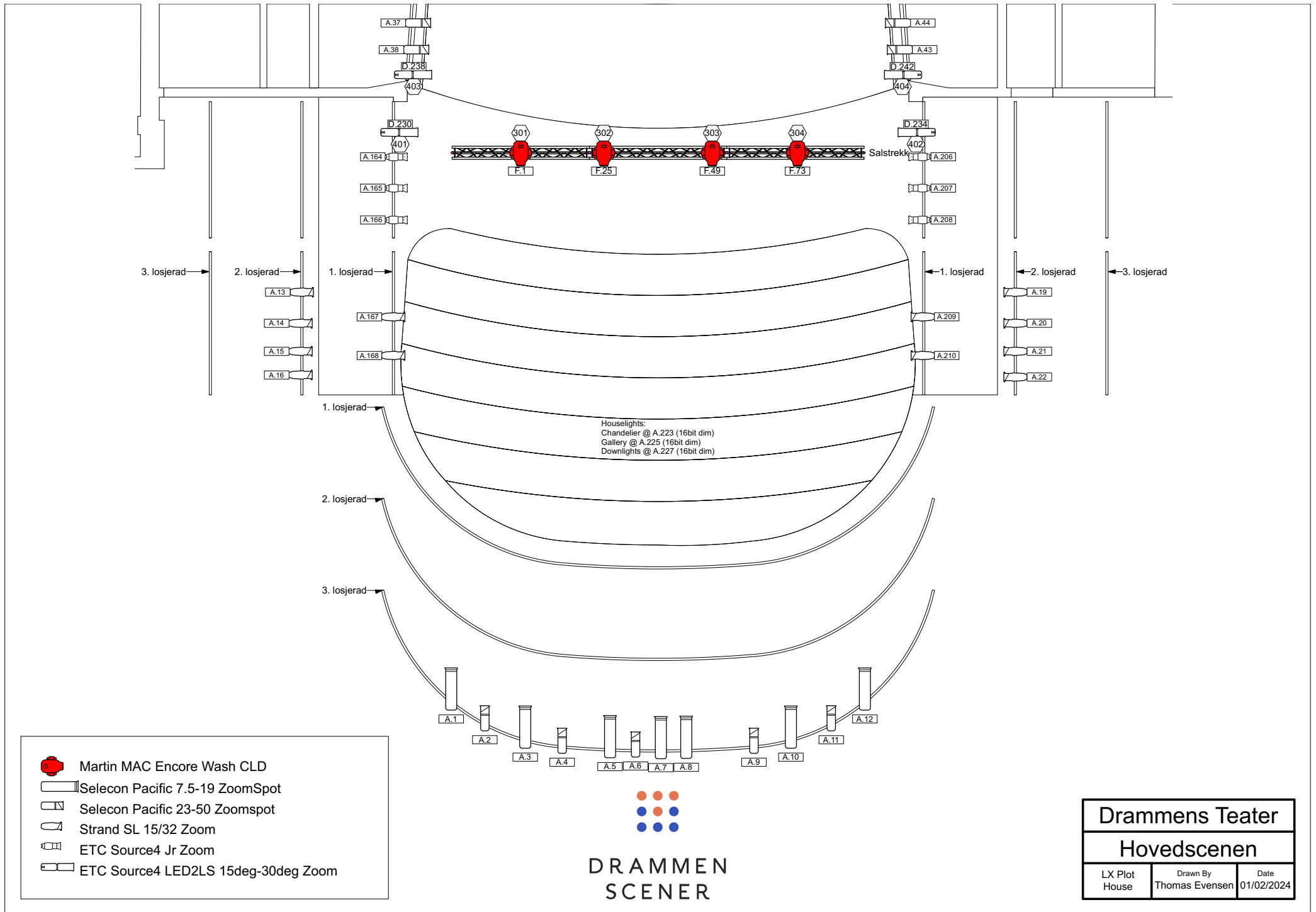
Tommy Aschim – Lighting Technician  
[tommy@drammenscener.no](mailto:tommy@drammenscener.no)



-  Clay Paky ALEDA B-EYE K25 shapes
-  Martin MAC Encore Performance CLD
-  Martin MAC Encore Wash CLD
-  PAR64 CP62
-  Showtec Stage Blinder 4

  
**DRAMMEN**  
**SCENER**

<b>Drammens Teater</b>		
<b>Hovedscenen</b>		
LX Plot Stage	Drawn By Thomas Evensen	Date 01/02/2024



Martin MAC Encore Wash CLD



Selecon Pacific 7.5-19 ZoomSpot



Selecon Pacific 23-50 Zoomspot



Strand SL 15/32 Zoom



ETC Source4 Jr Zoom



ETC Source4 LED2LS 15deg-30deg Zoom

# Drammens Teater

## AV Equipment Main Stage

**Projector:** 1 x Panasonic RZ970 WUXGA  
Brightness: 10.000 center lumens  
Resolution: 1,920 x 1,200  
Aspect Ratio: 16:10  
Lens: ET-DLE 170 standard lens

**Connections:** HDMI at downstage Right/ Left or FOH

**Screen:** 7 x 4 Meters fixed frame

**Monitor displays:** 1 x 42" w/ fixed tilted floor stand



# Drammens Teater

## Stage and rigging Main Stage

- Stage:** Depth: 11m  
Width: 13 m  
Proscenium height: 6,5 m.  
Proscenium opening: 8,84 m  
Height to ceiling: 14 m  
The stage floor is pine tree painted black.
- 1 x backdrop w/ split of black velvet.  
3 x pair of legs of black velvet.  
5 x borders of black velvet.
- Curtains:** 1 x Center curtain of black velvet. Manually split or automated hoist operated from control desk at stage left.  
1 x Front curtain of red velvet. Manually split. Operated from stage right.
- All curtains are certified fire resistant. Any backdrops that are to be hung must be certified fire resistant. Please send this in advance or bring to venue manager latest on arrival.
- Hanging points:** There is 21 pipe battens individually operated by a motorized automated fly system. 19 of these are above the stage and 2 are above the audience for front lights. Battens nr 1 and 2 (audience) has a weight limit of 450 kg (PQ) and 100 kg pr point (PL). Battens nr 3-19 has a weight limit of 300 kg (PQ) and 100 kg pr point (PL).  
The stage automation is only to be operated by authorized personnel.
- Power:** 2 x triple phase 63A 400V upstage left and right  
1 x triple phase 32A 400V upstage left and right  
2 x triple phase 63A 230V upstage right  
1 x triple phase 32A 2230V upstage right  
8 x single phase 16 A 230V located around the stage for backline
- Contact:** Rune Magnusson - Sound Technician  
rune@drammenscener.no
- Ernst G. Hagby - Sound Technician  
ernst@drammenscener.no
- Toro Heiskala – Technical Manager  
toro@drammenscener.no

